

Guide to Separating Household Garbage

General Guidelines:

- This guide contains basic information about the different types of garbage and the separation of garbage.
- When disposing of garbage, you must use the appropriate designated garbage bag.
- Please confirm which garbage station you are permitted to use. Each garbage station is managed by the local residents in the area, so please talk with your local neighborhood chairman or the residents in your area for details.
- Please confirm the appropriate garbage disposal day on the 'Disposal Day Calendar', and please ensure that your garbage is in the designated garbage station by 8:30am on that day.
- Garbage disposed of on the wrong day or non-separated garbage will not be collected. Please return this garbage to your house and dispose of it appropriately.
- You must not dispose of an excessive amount of garbage at one time.
- The garbage stations are managed by the local residents. Please abide by the rules of your local area, and dispose of garbage appropriately.

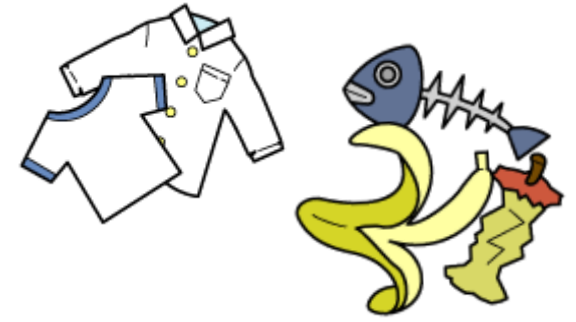


Inquiry : Odate City Hall
Environment Section
Tel. 0186-43-7049
E-mail : kankyo@city.odate.lg.jp

Burnable Garbage



Frequency of Garbage Collection : Twice a week
Kind of garbage bag : Designated White translucent garbage bag
Ex. Food scraps ; Cloth, etc. Not including Waste Paper (see below)



Shredded Garbage



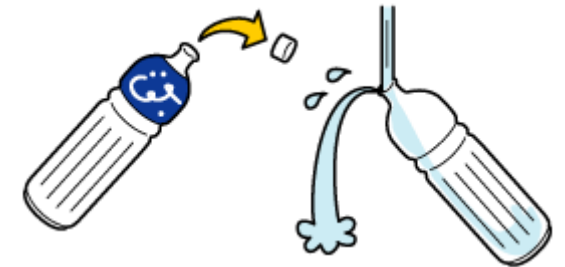
Frequency of Garbage Collection : Once a month
Kind of garbage bag : Designated Clear garbage bag
Ex. Curtains ; Blankets ; Leather ; Tree branches



PET Bottles



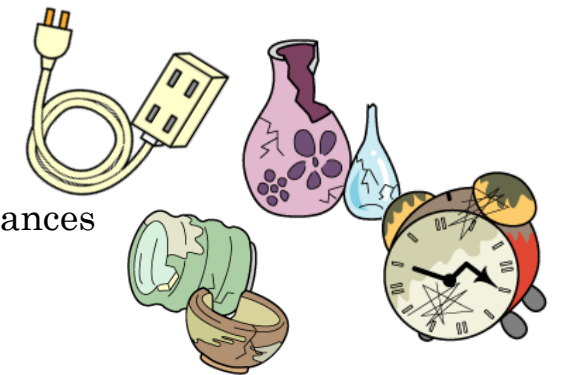
Frequency of Garbage Collection : Twice a month
Kind of garbage bag : Designated Clear garbage bag
Bottles containing the mark shown on the right
Remove the cap, empty and rinse the bottles



Landfill Garbage



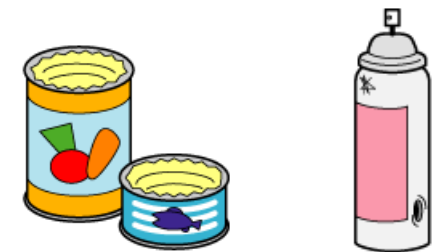
Frequency of Garbage Collection : Once a month
Kind of garbage bag : Designated Clear garbage bag
Ex. Ceramics such as dishes and rice bowls ; Dry cell batteries ; Appliances



Cans



Frequency of Garbage Collection : Twice a month
Kind of garbage bag : Designated Clear garbage bag
Empty and rinse the can and please remove the lid or cap etc.
*Dispose the removed lid or cap as Landfill Garbage. In the case of plastic lid or cap, dispose as Burnable Garbage.
*Please pierce a hole in spray cans.



Glass Bottles



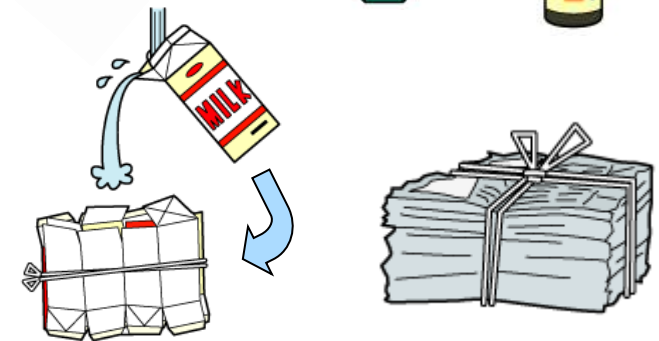
Frequency of Garbage Collection : Once a month
Kind of garbage bag : Designated Clear garbage bag
Remove the cap, empty and rinse the bottles



Waste Paper



Frequency of Garbage Collection : Once a month
Tied with string / rope around all four sides.
Ex. Newspapers ; Waxed paper cartons ; Cardboard ; Books



Scrap Metals



Frequency of Garbage Collection : Four times a year
Antenna ; Eighteen Liter Drum ; Toaster Oven ; Gas Water Heater ; Gas Stove ; Portable Gas Stove ; Portable Safe ; Tap/Faucet ; Rice Cooker ; Tyre Chain ; Electric Stove ; Toaster ; Sheet Iron ; Pot(not including Enameled Pots) ; Electric Grill ; Bread Maker ; Mochi Cooker ; Kettle ; Fish Roaster



Bulky Garbage

Garbage not mentioned above or garbage that does not fit into a designated garbage bag.
Fee is applicable. Please call 43-7049 for information.



Non-Collectable Items

Ex. TV ; Air-con ; Refrigerator ; Freezer ; Washing-machine ; Clothes Dryer ; Rechargeable Batteries ; Tyres ; Car Batteries ; Computers etc.

